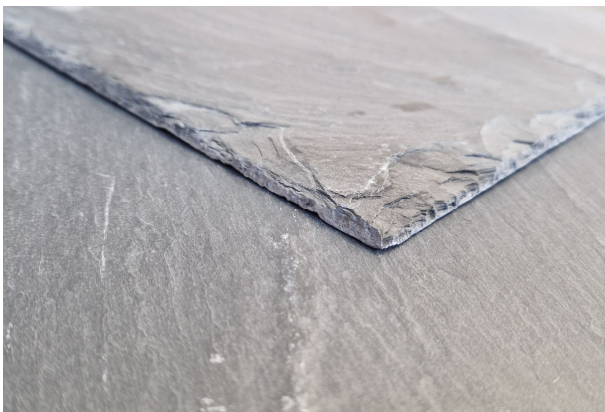
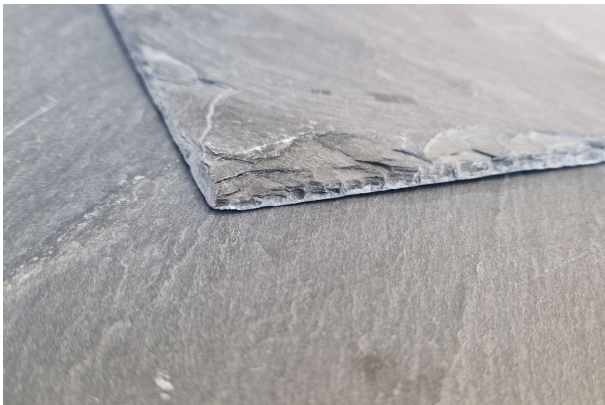
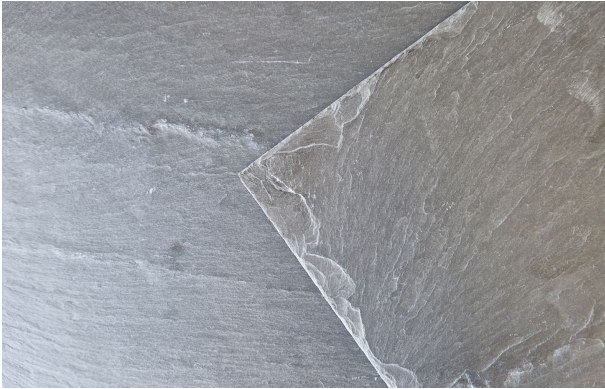


# Estillo 9

## Blue Grey Slate



Quarried in the Zamora region in Northern Spain. Our Estillo 9 Blue Grey has a dark blue grey to black colour. The slate is available in a variety of thicknesses and selection grades, and this level of meticulousness by the quarry ensures an extremely high level of quality is maintained. This means the customer can be confident purchasing with no unexpected surprises.

Due to the nature of the stone, all the selections are extremely flat and consistent, requiring minimal grading prior to laying. This allows for a very clean, crisp finished roof appearance.

The blue grey colour will not fade over time, therefore outperforming many of its similarly cost effective oppositions.

The Premium Grades of the Estillo 9 do have small metallic surface inclusions scattered across the surface of the slate, but these are stable and will not "bleed" down the roof.

The slate has outstanding test results offering fantastic resistance to weather conditions.

Fully Tested to BSEN12326-1:2004, attaining A1, T1 & S1 certification.

Unit 15 & 16, Airfield Approach Business Park  
Flookburgh  
Grange over Sands  
Cumbria  
LA11 7NG  
England

Telephone: 015395 59289  
Fax: 015395 58078  
E-mail: [sales@ukslate.com](mailto:sales@ukslate.com)  
Website: [www.ukslate.com](http://www.ukslate.com)

[www.ukslate.com](http://www.ukslate.com)





# Estillo 9

## Blue Grey Slate

### SLATE SPECIFICATIONS

#### Country of Origin:

Spain

#### Colour:

Blue Grey

#### Texture:

Light Riven Texture

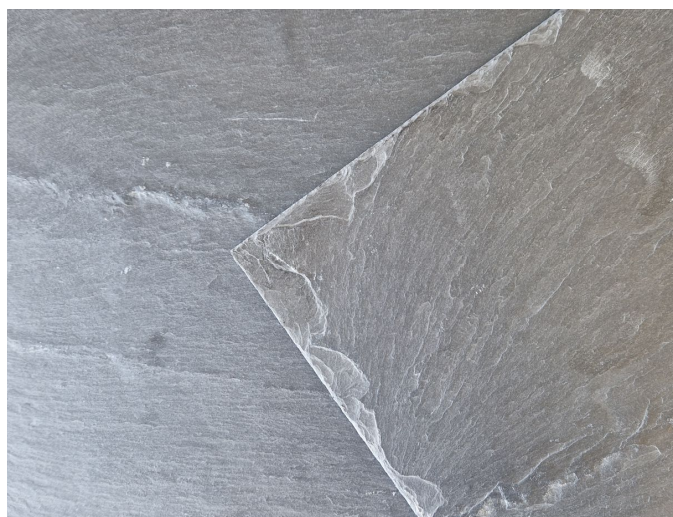
#### Thickness:

Prime - 6mm Nominal

Prime Heavy - 7mm Nominal

Premium - 6mm Nominal

Premium Heavy - 7mm Nominal



#### Sizes:

600x300mm

500x300mm

500x250mm

Other Size options are available.

#### Performance:

<b>Testing</b>	BSEN12326-1:2004
<b>Water Absorption</b>	A1 Result
<b>Thermal Cycles Test</b>	T1 Result
<b>Sulphur Dioxide Test</b>	S1 Result
<b>Guarantee</b>	Quarry Backed 30 year guarantee. Available on request.

#### Supply:

Extensive stocks are held at our distribution centres.

Nationwide and International delivery can be arranged for immediate despatch.

Unit 15 & 16, Airfield Approach Business Park  
Flookburgh  
Grange over Sands  
Cumbria  
LA11 7NG  
England

Telephone: 015395 59289  
Fax: 015395 58078  
E-mail: [sales@ukslate.com](mailto:sales@ukslate.com)  
Website: [www.ukslate.com](http://www.ukslate.com)

[www.ukslate.com](http://www.ukslate.com)

